

## **A Diverse and Connected World**

### *An Australian Indigenous Perspective*

#### **Key inquiry question**

How do Indigenous Australians have a unique connection and understanding of Country?

#### **Geography K-10**

##### **Outcomes**

GE3-1 describes the diverse features and characteristics of places and environments

GE3-2 explains interactions and connections between people, places and environments

##### **Students**

- Investigate the world's cultural diversity, including the culture of Indigenous Peoples
- Investigate how connections influence people's perception and understanding of places

##### **Geographical tools**

This series of lessons provides students with opportunities to engage with various geographical tools, including topographic, cadastral and choropleth maps.

##### **Lesson / activity outline**

The aim of this lesson series is to allow students to investigate how Aboriginal and Torres Strait Islander people relate to Country. Students will research Indigenous people's connection to place, with particular reference to the Darug Aboriginal people of the Sydney region who lived on Country around Brewongle Environmental Education Centre. Students will learn how to read a topographic map and the role of topography in Songlines. They will learn about the Aboriginal Nations (clan groups) of the Sydney region.

##### **Required resources, equipment and technology**

- A device to access weblinks
- This sheet printed
- Pen or pencil

*TEACHER PAGE*

**Weblinks utilised**

How to Read a Topo Map <https://www.youtube.com/watch?v=CoVcRxza8nI>

Mabo Day- <http://www.abc.net.au/btn/story/s4014894.htm>

Aboriginal Languages- <https://mgns.w.org.au/sector/aboriginal/aboriginal-language-map/>

Yarramundi- <http://www.historyofaboriginalsydney.edu.au>

Songlines- [http://fadlmedia.s3.amazonaws.com/firstaust/clips/songlines\\_pr.mp4](http://fadlmedia.s3.amazonaws.com/firstaust/clips/songlines_pr.mp4)

Songlines- [https://www.youtube.com/watch?v=zp\\_vYfEiuGU](https://www.youtube.com/watch?v=zp_vYfEiuGU)

TEACHER PAGE

## ***A Diverse and Connected World***

Understanding our world means recognising that there are many different peoples who practice their cultures in many different ways. Here, you will learn about diversity and connections between the Indigenous Peoples of Australia, focusing on concepts of landscape, landform, culture and geographical features.

### **Activity 1 – Discovering Topography**

What is a topographic map? A topographical map is one that shows the physical features of the land. Besides just showing landforms such as mountains and rivers, the map also shows the elevation changes of the land. Elevation is shown using contour lines.

Watch the following YouTube clip on how to read a topographic map.

<https://www.youtube.com/watch?v=CoVcRxza8nI>

Now visit this web link <https://maps.six.nsw.gov.au/> and identify some of these landforms.

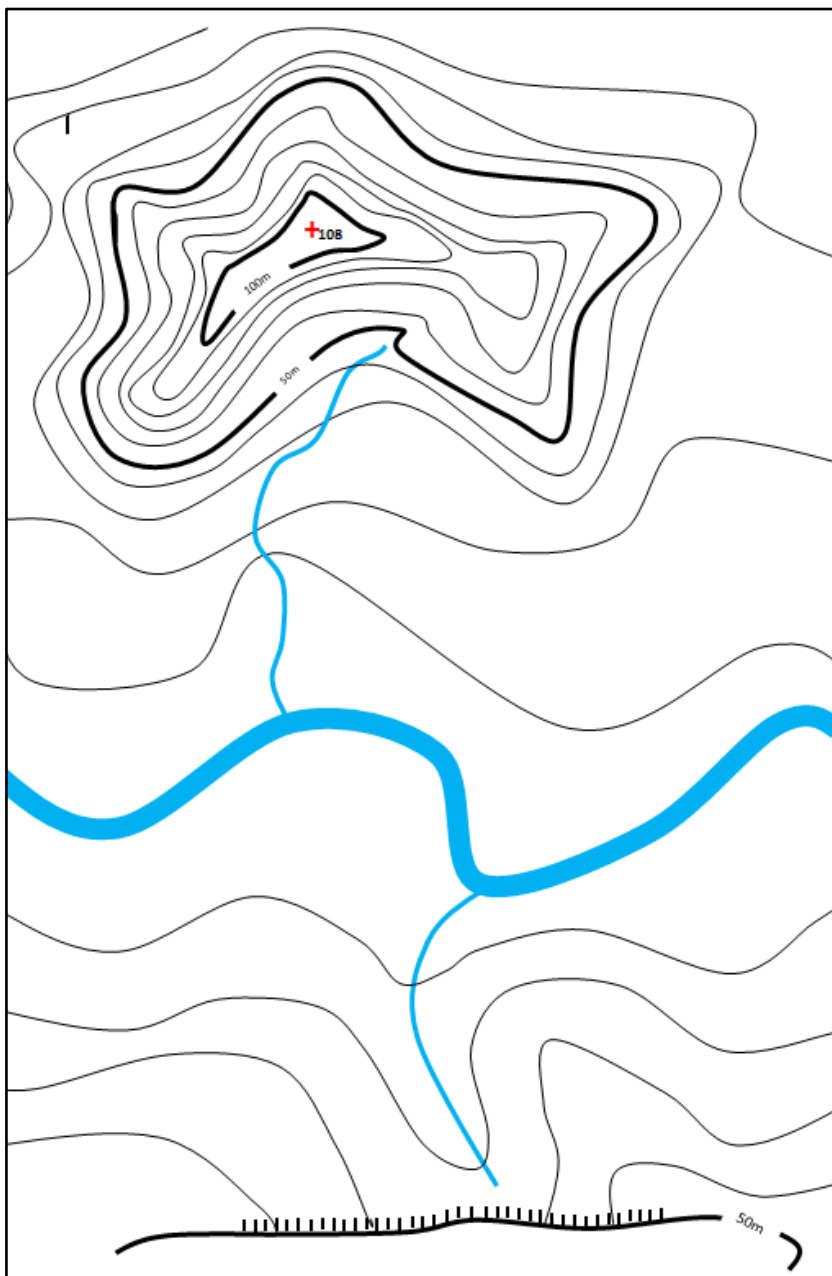
Instructions -.






1. Click on the map of NSW and zoom into the Sydney area
2. Click on the Basemaps button on top right hand side
3. Click on “Looking for 1943 imagery?”
4. Click on Topo Maps
5. Use your mouse to zoom in on the map and you will be able to see the topographic contour lines.
6. Try this for where you live and see whether the area is hilly or flat. To do this, type your suburb or address into the “Search for a location” field on the top left of screen.

## Activity 2 – Reading a Topographic Map

On the topographic map below mark or circle the following areas:

- A steep hill (where the contour lines are closest together)
- Flat or almost flat land (where the contour lines are further apart)
- River
- Cliff
- High point
- Trace over the 80m contour line with your pen or pencil



Key	
	contour line
	50m interval contour line
	Waterway
	Elevation
	Cliff

**Activity 3 – Darug Connections**

Watch: <http://www.abc.net.au/btn/story/s4014894.htm>

What does the term *terra nullis* commonly mean?

---

---

Was Australia uninhabited when the First Fleet arrived?

---

Look at the map <https://mgnsw.org.au/sector/aboriginal/aboriginal-language-map/>

Was Australia one Aboriginal nation before the arrival of the First Fleet? \_\_\_\_\_

Focus the mouse over the Sydney area. Who were the Aboriginal people who lived around the Western Sydney area?

---

*Go to <http://www.historyofaboriginalsydney.edu.au> and use the search box to find answers to the next questions. Just type the questions into the search box.*

Who was Yarramundi? \_\_\_\_\_

Where was Yarramundi from? \_\_\_\_\_

## Activity 4 – Songlines

Watch videos

Songlines clip from SBS Series First

Australians [http://fadlmedia.s3.amazonaws.com/firstaust/clips/songlines\\_pr.mp4](http://fadlmedia.s3.amazonaws.com/firstaust/clips/songlines_pr.mp4)  
(1:44 length)

Colin Jones (of Kaladoon and Nunuckle descent) on Songlines and Art [https://www.youtube.com/watch?v=zp\\_vYfEiuGU](https://www.youtube.com/watch?v=zp_vYfEiuGU) (3:34 length)

What is a Songline?

---

---

---

How can a Songline be a map and how does art reflect this?

---

---

---

How did Aboriginal and Torres Strait Islander people define the boundaries of their Country?

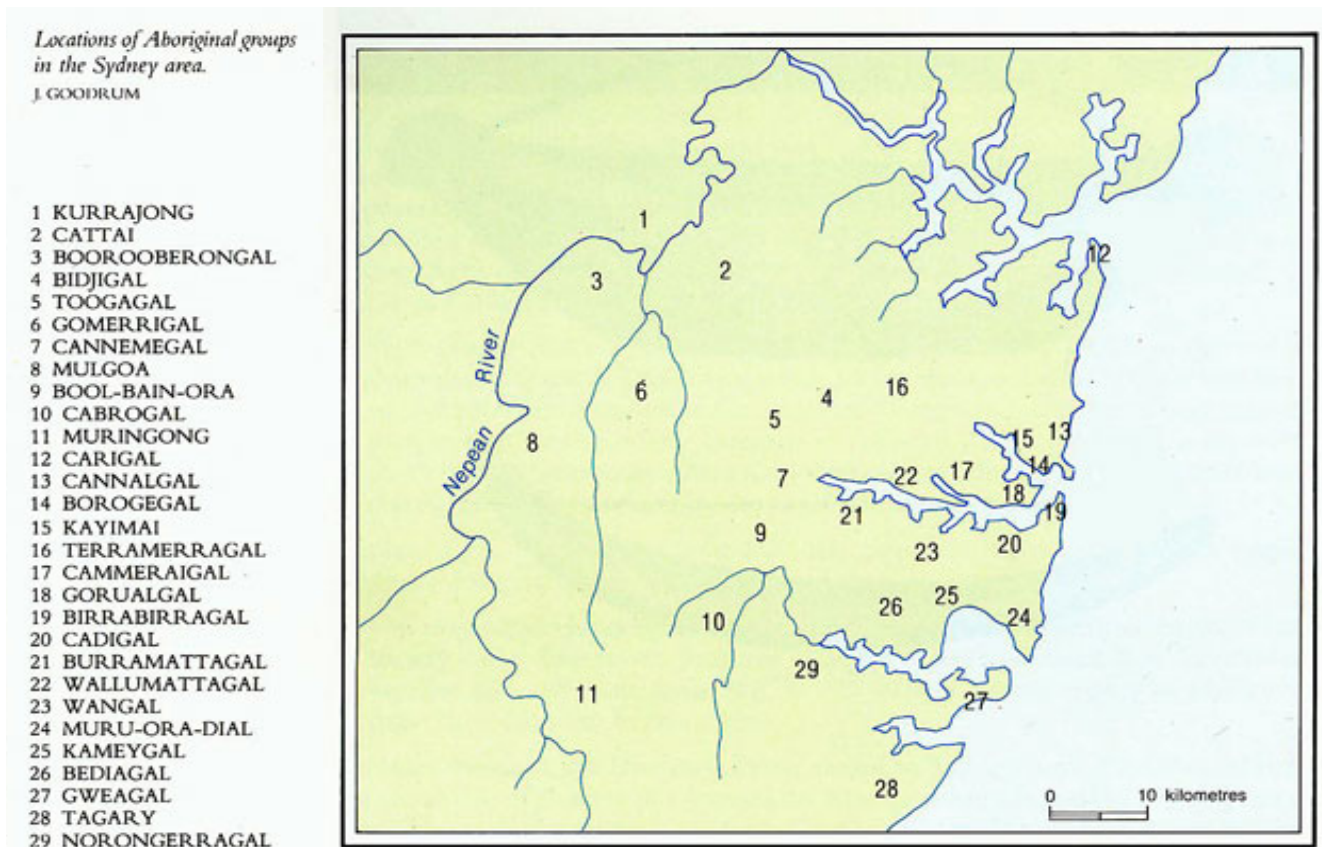
---

---

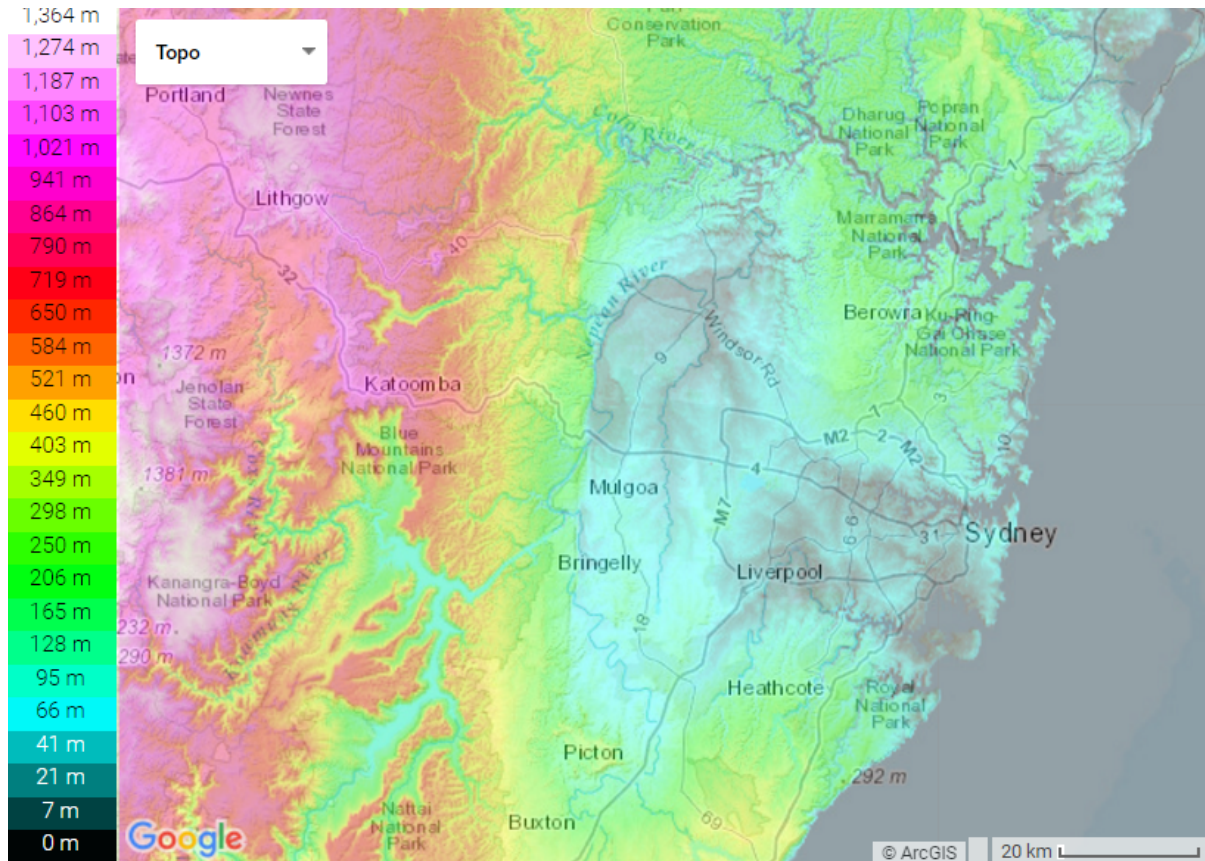
*Aboriginal and Torres Strait Islander peoples used landforms such as ridges and rivers to mark edges of territory, not straight lines on a map. When travelling Songlines, people made a campfire at the edge of their Country and waited for their neighbours to invite them onto the Country they wished to visit. Before they could cross new Country they would have to learn the traditions of the new Country.*

## Activity 5 – Clan Groups

Look at a map of the Sydney Aboriginal Clans and compare with the topographic map of the Sydney Region on the following page.







Note that the height (elevation) of the land is shown by colour shading – like contour lines on the topographic map that we looked at last lesson.

Which clan lived in the flat lands around Richmond (2)? \_\_\_\_\_

What clan group lived around Brewongle (3)? \_\_\_\_\_

Mark where your school is on both maps. Which clans lived near your school?

\_\_\_\_\_

Maps can be found at <http://www.sydneybarani.com.au/sites/aboriginal-people-and-place/> and <http://en-au.topographic-map.com/places/Sydney-6332/>